

SAMSUNG

BN68-04016A-02



BN68-04016A-02



Assemble Stand before removing TV from shipping box

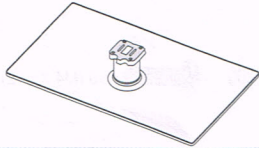
Scan this with your SMART Phone for How-to Video
Visit us samsung.com/SPSN for more Video guides

Installing the TV Stand

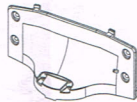
Components

When installing the stand, use the provided components and parts.

A 1 EA



B 1 EA



C x8 (M4 X L12)

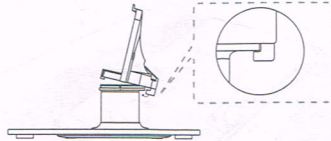


Stand (depending on the model)

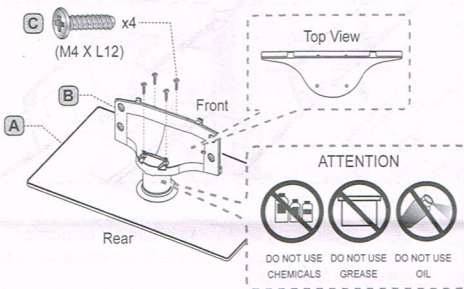
Guide Stand

Screws

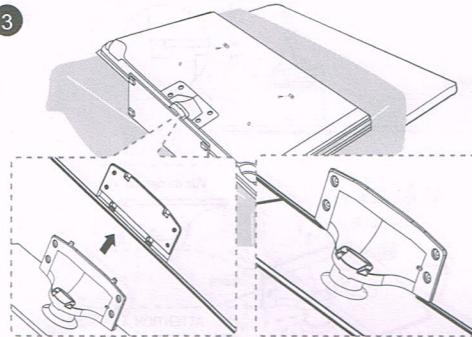
1



2



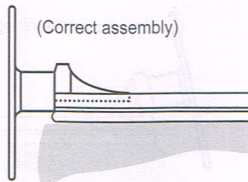
3



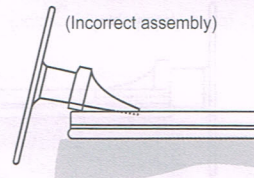
- Place a soft cloth over the table to protect the TV, and then place the TV on the cloth screen side down.
- Insert the Stand Guide into the slot of TV bottom side.

4

Side View

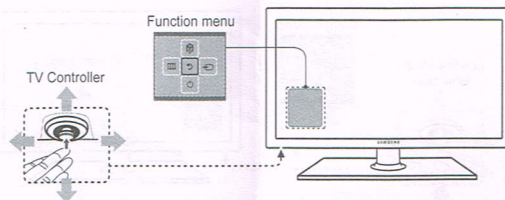
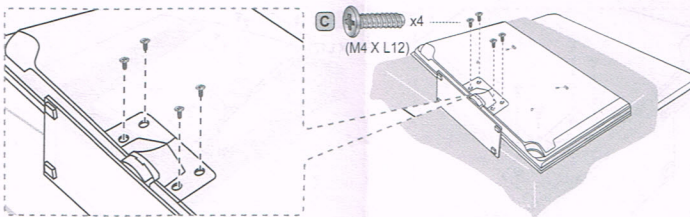


(Correct assembly)



(Incorrect assembly)

5



Caution



- Make sure to distinguish between the front and back of each component when assembling them.
- Make sure that at least two persons lift and move the TV.